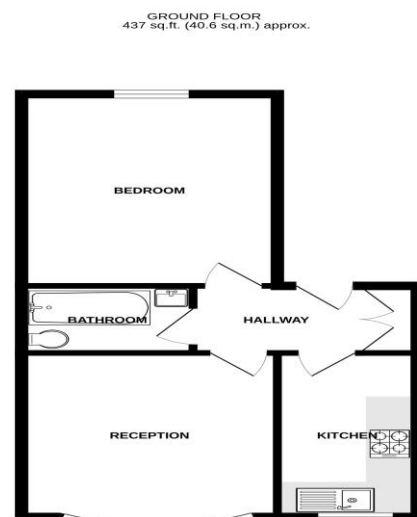




Score	Energy rating	Current	Potential
92+	A		
81-91	B		
69-80	C		77 C
55-68	D	68 D	
39-54	E		
21-38	F		
1-20	G		



TOTAL FLOOR AREA: 437 sq. ft. (40.6 sq. m.) approx.
While every attempt has been made to ensure the accuracy of the information contained herein, Hi Residential is not responsible for any errors or omissions. This plan is for information only and should not be used for any other purpose. Hi Residential is not a surveyor and does not provide any warranty or guarantee for the accuracy of the information provided. Hi Residential is not a surveyor and does not provide any warranty or guarantee for the accuracy of the information provided. Hi Residential is not a surveyor and does not provide any warranty or guarantee for the accuracy of the information provided.

To arrange an appointment to view this property or to book a valuation on your own property, contact hi residential for a professional Prompt and friendly service

Hi Residential Limited. Registered in England No. 10082765. Registered office: Heritage House, 34b North Cray Road, Bexley, United Kingdom, DA5 3LZ

24 Plumstead Common Road, SE183TN
 020 8316 6616
 sales@hi-residential.com
 lettings@hi-residential.com
 www.hi-residential.com



Vicarage Park, Plumstead, SE18 7SX

Price £220,000 Leasehold



Hi Residential Limited. Registered in England No. 10082765. Registered office: Heritage House, 34b North Cray Road, Bexley, United Kingdom, DA5 3LZ

24 Plumstead Common Road, SE183TN
 020 8316 6616
 sales@hi-residential.com
 lettings@hi-residential.com
 www.hi-residential.com



Property Details

- Entrance Hall*
- Lounge 11' 5" x 11' 3" (3.49m x 3.44m)*
- Kitchen 11' 5" x 6' 2" (3.49m x 1.88m)*
- Bedroom 13' 5" x 11' 3" (4.08m x 3.44m)*
- Bathroom 4' 8" x 7' 7" (1.43m x 2.31m)*

Discover this generously sized one bedroom first floor flat, offering comfortable living in a convenient location. Boasting a double bedroom, fitted kitchen, double bedroom, and bathroom, this property provides ample space for modern lifestyles. Perfectly situated for excellent transport links, with Woolwich and Plumstead stations nearby, commuting is made easy. Additionally, the property is within close proximity to Plumstead Common, providing residents with access to green spaces and outdoor leisure activities. Benefiting from gas central heating, this flat ensures warmth and comfort throughout the year, making it an ideal place to call home. Don't miss out on this fantastic opportunity to own a well-appointed flat in a desirable location. Contact us today to arrange a viewing and secure your chance to make this property yours.

